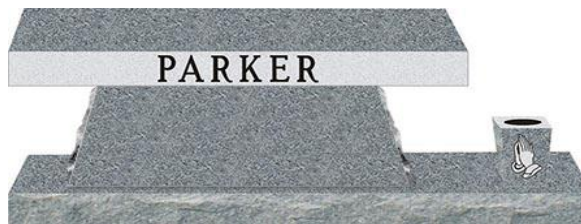
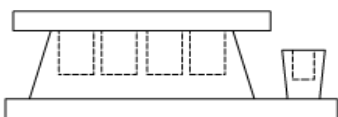


EG-2000

* Lettering, Vase, Base, Cremation Holes Add'l.

Cremation Bench



* Shown in Finish One

Finish One

SEAT	4-0 x 1-2 x 0-4	PFT, Balance Sawn
SUPPORT	3-6 x 0-8 x 1-2	Pol. 2, Sawn Top, BRP

Weight for Grey:	775 lbs. (Seat/Support)
Weight for Colors:	861 lbs. (Seat/Support)

Granite Color	Seat	Support	Total	Vase- 0-8 x 0-6 x 0-10 (P2 vs P5)	
Blue Ridge/Pink Pearl/Pink Pearl	\$390	\$857	\$1,247	\$175	\$334
Eagle Blue	\$486	\$939	\$1,426	\$208	\$400
Kershaw/Grey Cloud	\$648	\$1,151	\$1,799	\$271	\$579
Sal. Pink/Morning Rose/Texas Rose	\$943	\$1,310	\$2,252	\$271	\$579
Medium Barre	\$1,105	\$1,521	\$2,626	\$271	\$579
Amer. Black/Eagle Black/D. Mahogany	\$1,138	\$1,889	\$3,026	\$271	\$579
Jet Black/Eagle Ruby Red	\$1,383	\$2,302	\$3,685	\$271	\$579
Blue Pearl	\$1,674	\$2,765	\$4,439	\$271	\$579



Finish Two

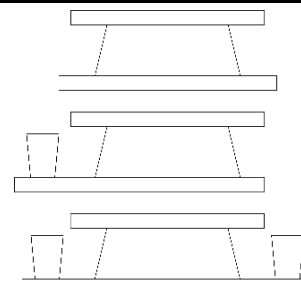
SEAT	4-0 x 1-2 x 0-4	All Polished
SUPPORT	3-6 x 0-8 x 1-2	Pol. 4, Sawn Top

Granite Color	Seat	Support	Total	Turned Vase	0-6 x 10	0-8 x 1-0
Blue Ridge/Pink Pearl	\$976	\$1,078	\$2,054		\$182	\$265
Eagle Blue	\$1,220	\$1,452	\$2,672		\$182	\$265
Kershaw/Grey Cloud	\$1,462	\$1,693	\$3,155		\$569	\$761
Sal. Pink/Morning Rose/Texas Rose	\$1,607	\$2,021	\$3,628		\$367	\$728
Medium Barre	\$1,803	\$2,276	\$4,078		\$245	\$456
Amer. Black/Eagle Black/D. Mahogany	\$1,951	\$2,282	\$4,234		\$533	\$847
Jet Black/Eagle Ruby Red	\$2,276	\$2,696	\$4,971		\$212	\$318
Blue Pearl	\$2,732	\$3,139	\$5,871		\$228	\$361

Pink Pearl NOT Included in Vase Pricing. See Turned Vase Section for Pink Pearl Pricing. Some Colors May Be 4-6 Months Delivery Time.

4-6 x 1-4 x 0-4 Base (no vase) / 5-2 x 1-4 x 0-4 Base (1 vase) / 6-0 x 1-4 x 0-4 Base (2 vases)

Blue Ridge/Pink Pearl	\$486	\$559	\$645
Eagle Blue	\$582	\$671	\$777
Kershaw/Grey Cloud	\$741	\$850	\$986
Sal. Pink/Morning Rose/Texas Rose	\$1,078	\$1,237	\$1,435
Medium Barre	\$1,158	\$1,326	\$1,541
Amer. Black/Eagle Black/D. Mahogany	\$1,617	\$1,862	\$2,160
Jet Black/Eagle Ruby Red	\$1,624	\$1,869	\$2,166
Blue Pearl	\$1,862	\$2,137	\$2,481



*Vases NOT included in BASE ONLY pricing above. *All bases are Polished Top/BRP Edges

Add: \$75 for each Cremation Hole in Support (4 Holes MAX)

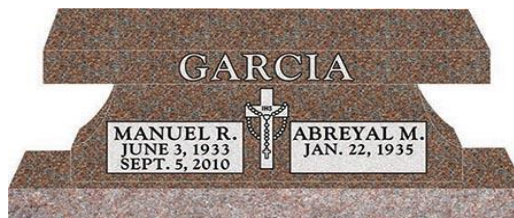
Carve & Lettering Charges

Carve and Letter Seat Edge Only	\$499	Family Name Seat Edge Only	\$185
Carve and Letter Support	\$761	Carved Square Vase	\$149

EG-2001

* Lettering, Vase, Base, Cremation Holes Add'l.

Cremation Bench



* Shown in Finish Two

Finish One

SEAT	4-0 x 1-2 x 0-4	PFT, Balance Sawn
SUPPORT	3-6 x 0-8 x 1-2	Pol. 2, Saw Top, BRP

Weight for Grey:	775 lbs. (Seat/Support)
Weight for Colors:	861 lbs. (Seat/Support)

Granite Color	Seat	Support	Total	Vase- 0-8 x 0-6 x 0-10 (P2 vs P5)	
Blue Ridge/Pink Pearl	\$390	\$1,138	\$1,528	\$175	\$334
Eagle Blue	\$486	\$1,392	\$1,879	\$208	\$400
Kershaw/Grey Cloud	\$648	\$1,439	\$2,087	\$271	\$579
Sal. Pink/Morning Rose/Texas Rose	\$943	\$1,607	\$2,550	\$271	\$579
Medium Barre	\$1,105	\$1,991	\$3,096	\$271	\$579
Amer. Black/Eagle Black/D. Mahogany	\$1,138	\$2,788	\$3,926	\$271	\$579
Jet Black/Eagle Ruby Red	\$1,383	\$3,102	\$4,485	\$271	\$579
Blue Pearl	\$1,674	\$3,291	\$4,965	\$271	\$579

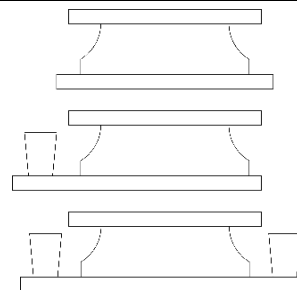
Finish Two

SEAT	4-0 x 1-2 x 0-4	All Polished
SUPPORT	3-6 x 0-8 x 1-2	Pol. 4, Sawn Top

Granite Color	Seat	Support	Total	Turned Vase	0-6 x 10	0-8 x 1-0
Blue Ridge/Pink Pearl	\$976	\$1,922	\$2,897		\$182	\$265
Eagle Blue	\$1,220	\$2,206	\$3,427		\$182	\$265
Kershaw/Grey Cloud	\$1,462	\$2,276	\$3,737		\$569	\$761
Sal. Pink/Morning Rose/Texas Rose	\$1,607	\$2,477	\$4,085		\$367	\$728
Medium Barre	\$1,796	\$2,801	\$4,597		\$245	\$456
Amer. Black/Eagle Black/D. Mahogany	\$1,951	\$3,483	\$5,434		\$533	\$847
Jet Black/Eagle Ruby Red	\$2,276	\$3,883	\$6,159		\$212	\$318
Blue Pearl	\$2,732	\$4,468	\$7,200		\$228	\$361

Pink Pearl NOT Included in Vase Pricing. See Turned Vase Section for Pink Pearl Pricing. Some Colors May Be 4-6 Months Delivery Time.

4-6 x 1-4 x 0-4 Base (no vase) / 5-2 x 1-4 x 0-4 Base (1 vase) / 6-0 x 1-4 x 0-4 Base (2 vases)	Seat	Support	Total
Blue Ridge/Pink Pearl	\$486	\$559	\$645
Eagle Blue	\$582	\$671	\$777
Kershaw/Grey Cloud	\$741	\$850	\$986
Sal. Pink/Morning Rose/Texas Rose	\$1,078	\$1,237	\$1,435
Medium Barre	\$1,158	\$1,326	\$1,541
Amer. Black/Eagle Black/D. Mahogany	\$1,617	\$1,862	\$2,160
Jet Black/Eagle Ruby Red	\$1,624	\$1,869	\$2,166
Blue Pearl	\$1,862	\$2,137	\$2,481



*Vases NOT included in BASE ONLY pricing above. *All bases are Polished Top/BRP Edges

Add: \$75 for each Cremation Hole in Support (4 Holes MAX)

Carve & Lettering Charges

Carve and Letter Seat Edge Only	\$499	Family Name Seat Edge Only	\$185
Carve and Letter Support	\$761	Carved Square Vase	\$149

EG-2002

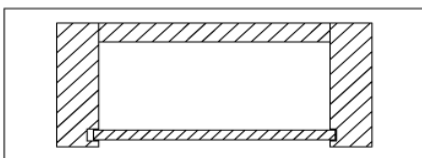
* Lettering, Vase, Base Add'l.

Cremation Niche Bench

(Pre-Assembled Unit)

Backwall: 1-10 x 0-2 x 1-1

Interior: 22" x 9"



Finish One

SEAT	3-4 x 1-2 x 0-4	PFT, Balance Saw	DOOR	1-11 x 0-1 x 1-1	Pol. 1, Balance Saw	736 lbs. in Grey
ENDS	1-1 x 0-4 x 1-1	Pol. 1, Balance Saw	BASE	3-6 x 1-4 x 0-4	PFT, BRP	780 lbs. in Colors

* Shown in Finish Two

Granite Color		Granite		Vase- 0-8 x 0-6 x 0-10 (P2 vs P5)		
Blue Ridge/Pink Pearl		\$2,633			\$175	\$334
Eagle Blue		\$2,950			\$208	\$400
Kershaw/Grey Cloud		\$2,967			\$271	\$579
Sal. Pink/Morning Rose/Texas Rose		\$4,204			\$271	\$579
Medium Barre		\$4,541			\$271	\$579
Amer. Black/Eagle Black/D. Mahogany		\$5,325			\$271	\$579
Jet Black/Eagle Ruby Red		\$5,590			\$271	\$579
Blue Pearl		\$6,417			\$271	\$579

Finish Two

SEAT	3-4 x 1-2 x 0-4	All Polished	DOOR	1-11 x 0-1 x 1-1	Pol. 1, Balance Saw	
ENDS	1-1 x 0-4 x 1-1	Pol. 4, Sawn Top	BASE	3-6 x 1-4 x 0-4	PFT, BRP	

Granite Color		Granite		Turned Vase		
				0-6 x 10	0-8 x 1-0	
Blue Ridge/Pink Pearl		\$3,374			\$182	\$265
Eagle Blue		\$3,900			\$182	\$265
Kershaw/Grey Cloud		\$4,773			\$569	\$761
Sal. Pink/Morning Rose/Texas Rose		\$5,457			\$367	\$728
Medium Barre		\$5,957			\$245	\$456
Amer. Black/Eagle Black/D. Mahogany		\$6,870			\$533	\$847
Jet Black/Eagle Ruby Red		\$7,548			\$212	\$318
Blue Pearl		\$8,666			\$228	\$361

Pink Pearl NOT Included in Vase Pricing. See Turned Vase Section for Pink Pearl Pricing. Some Colors May Be 4-6 Months Delivery Time.

Add for 4-6 x 1-4 x 0-4 Base (no vase) / 5-2 x 1-4 x 0-4 Base (1 vase) / 6-0 x 1-4 x 0-4 Base (2 vases)

Blue Ridge/Pink Pearl	\$109	\$182	\$268	
Eagle Blue	\$129	\$218	\$324	
Kershaw/Grey Cloud	\$165	\$275	\$410	
Sal. Pink/Morning Rose/Texas Rose	\$241	\$400	\$599	
Medium Barre	\$258	\$427	\$642	
Amer. Black/Eagle Black/D. Mahogany	\$357	\$476	\$900	
Jet Black/Eagle Ruby Red	\$361	\$605	\$903	
Blue Pearl	\$413	\$688	\$1,032	

*Vases NOT included in BASE ONLY pricing above. *All bases are Polished Top/BRP Edges

Carve & Lettering Charges

Carve and Letter Seat Edge Only	\$499	Carved & Lettered Door	\$301	Family Name	\$185
Carve Flutes on Front of Legs	\$301	Carved Square Vase	\$149	on Seat Edge	

EG-2003

* Lettering, Vase, Base Addt'l.

Harp Leg Bench



Finish One

SEAT	4-0 x 1-2 x 0-4	PFT, Balance Sawn
(2) SUPPORTS	1-0 x 0-4 x 1-2	Pol. 2, Bal. Sawn

* Shown in Finish One

Weight for Grey:	421 lbs. (Seat/Support)
Weight for Colors:	468 lbs. (Seat/Support)

Granite Color	Seat	(2) Supports	Total
Blue Ridge/Pink Pearl	\$390	\$1,230	\$1,621
Eagle Blue	\$486	\$1,320	\$1,806
Kershaw/Grey Cloud	\$648	\$1,465	\$2,113
Sal. Pink/Morning Rose/Texas Rose	\$943	\$1,571	\$2,514
Medium Barre	\$1,105	\$1,710	\$2,815
Amer. Black/Eagle Black/D. Mahogany	\$1,138	\$1,750	\$2,887
Jet Black/Eagle Ruby Red	\$1,383	\$1,786	\$3,169
Blue Pearl	\$1,674	\$2,090	\$3,764



Vase- 0-8 x 0-6 x 0-10 (P2 vs P5)	
\$175	\$334
\$208	\$400
\$271	\$579
\$271	\$579
\$271	\$579
\$271	\$579
\$271	\$579
\$271	\$579

Finish Two

SEAT	4-0 x 1-2 x 0-4	All Polished
(2) SUPPORTS	1-0 x 0-4 x 1-2	Pol. 4, Sawn Top

Granite Color	Seat	(2) Supports	Total
Blue Ridge/Pink Pearl	\$976	\$1,839	\$2,815
Eagle Blue	\$1,220	\$1,965	\$3,185
Kershaw/Grey Cloud	\$1,462	\$2,196	\$3,658
Sal. Pink/Morning Rose/Texas Rose	\$1,607	\$2,355	\$3,962
Medium Barre	\$1,796	\$2,553	\$4,349
Amer. Black/Eagle Black/D. Mahogany	\$1,951	\$2,600	\$4,551
Jet Black/Eagle Ruby Red	\$2,276	\$2,639	\$4,915
Blue Pearl	\$2,732	\$2,944	\$5,676

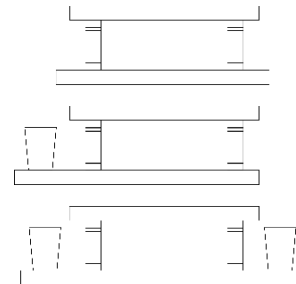
Turned Vase	0-6 x 10	0-8 x 1-0
\$182	\$265	\$265
\$182	\$265	\$265
\$569	\$761	\$761
\$367	\$728	\$728
\$245	\$456	\$456
\$533	\$847	\$847
\$212	\$318	\$318
\$228	\$361	\$361



Pink Pearl NOT Included in Vase Pricing. See Turned Vase Section for [Pink Pearl](#) Pricing. Some Colors May Be 4-6 Months Delivery Time.

4-6 x 1-4 x 0-4 Base (no vase) / 5-2 x 1-4 x 0-4 Base (1 vase) / 6-0 x 1-4 x 0-4 Base (2 vases)

Blue Ridge/Pink Pearl	\$486	\$559	\$645
Eagle Blue	\$582	\$671	\$777
Kershaw/Grey Cloud	\$741	\$850	\$986
Sal. Pink/Morning Rose/Texas Rose	\$1,078	\$1,237	\$1,435
Medium Barre	\$1,158	\$1,326	\$1,541
Amer. Black/Eagle Black/D. Mahogany	\$1,617	\$1,862	\$2,160
Jet Black/Eagle Ruby Red	\$1,624	\$1,869	\$2,166
Blue Pearl	\$1,862	\$2,137	\$2,481



*Vases NOT included in BASE ONLY pricing above. *All bases are Polished Top/BRP Edges

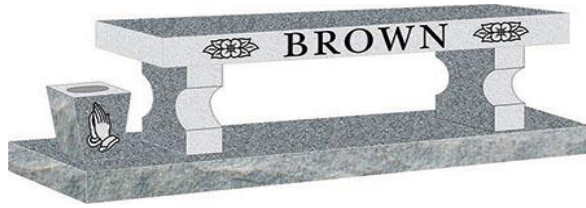
Carve & Lettering Charges

Carve and Letter Seat Edge Only	\$499	Family Name Seat Edge Only	\$185
Carve and Letter Top of Seat	\$761	Carved Square Vase	\$149

EG-2004

* Lettering, Vase, Base Addt'l.

Core Leg Bench



* Shown in Finish One

Finish One

SEAT	4-0 x 1-2 x 0-4	PFT, Balance Sawn
(2)SUPPORTS	1-0 x 0-4 x 1-2	P2, Bal. Sawn

Weight for Grey:

421 lbs. (Seat/Support)

Weight for Colors:

468 lbs. (Seat/Support)

Granite Color	Seat	(2) Supports	Total
Blue Ridge/Pink Pearl	\$390	\$556	\$946
Eagle Blue	\$486	\$612	\$1,098
Kershaw/Grey Cloud	\$648	\$688	\$1,336
Sal. Pink/Morning Rose/Texas Rose	\$943	\$764	\$1,707
Medium Barre	\$1,105	\$814	\$1,918
Amer. Black/Eagle Black/D. Mahogany	\$1,138	\$959	\$2,097
Jet Black/Eagle Ruby Red	\$1,383	\$1,118	\$2,500
Blue Pearl	\$1,674	\$1,257	\$2,930



Vase- 0-8 x 0-6 x 0-10 (P2 vs P5)	
\$175	\$334
\$208	\$400
\$271	\$579
\$271	\$579
\$271	\$579
\$271	\$579
\$271	\$579
\$271	\$579

Finish Two

SEAT	4-0 x 1-2 x 0-4	All Polished
(2)SUPPORTS	1-0 x 0-4 x 1-2	Pol. 4, Sawn Top

Granite Color	Seat	(2) Supports	Total
Blue Ridge/Pink Pearl	\$976	\$1,839	\$2,815
Eagle Blue	\$1,220	\$1,965	\$3,185
Kershaw/Grey Cloud	\$1,462	\$2,196	\$3,658
Sal. Pink/Morning Rose/Texas Rose	\$1,607	\$2,355	\$3,962
Medium Barre	\$1,803	\$2,553	\$4,356
Amer. Black/Eagle Black/D. Mahogany	\$1,951	\$2,600	\$4,551
Jet Black/Eagle Ruby Red	\$2,276	\$2,639	\$4,915
Blue Pearl	\$2,732	\$2,944	\$5,676

Turned Vase

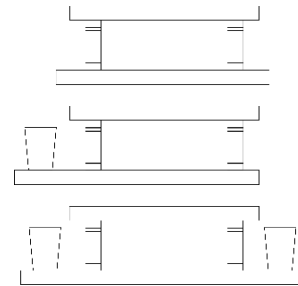


0-6 x 10	0-8 x 1-0
\$182	\$265
\$182	\$265
\$569	\$761
\$367	\$728
\$245	\$456
\$533	\$847
\$212	\$318
\$228	\$361

Pink Pearl NOT Included in Vase Pricing. See Turned Vase Section for [Pink Pearl](#) Pricing. Some Colors May Be 4-6 Months Delivery Time.

4-6 x 1-4 x 0-4 Base (no vase) / 5-2 x 1-4 x 0-4 Base (1 vase) / 6-0 x 1-4 x 0-4 Base (2 vases)

Blue Ridge/Pink Pearl	\$486	\$559	\$645
Eagle Blue	\$582	\$671	\$777
Kershaw/Grey Cloud	\$741	\$850	\$986
Sal. Pink/Morning Rose/Texas Rose	\$1,078	\$1,237	\$1,435
Medium Barre	\$1,158	\$1,326	\$1,541
Amer. Black/Eagle Black/D. Mahogany	\$1,617	\$1,862	\$2,160
Jet Black/Eagle Ruby Red	\$1,624	\$1,869	\$2,166
Blue Pearl	\$1,862	\$2,137	\$2,481



*Vases NOT included in BASE ONLY pricing above. *All bases are Polished Top/BRP Edges

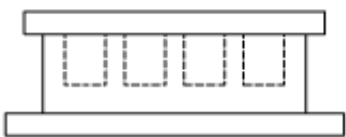
Carve & Lettering Charges

Carve and Letter Seat Edge Only	\$499	Family Name Seat Edge Only	\$185
Carve and Letter Top of Seat	\$761	Carved Square Vase	\$149

EG-2006

* Lettering, Vase, Base, Cremation Holes Add'l.

Cremation Bench



* Shown in Finish One

Finish One

SEAT	4-0 x 1-2 x 0-4	PFT, Balance Sawn
SUPPORT	3-6 x 0-8 x 1-2	Pol. 2, Sawn Top, BRP

Granite Color	Seat	Support	Total
Blue Ridge/Pink Pearl	\$390	\$857	\$1,247
Eagle Blue	\$486	\$943	\$1,429
Kershaw/Grey Cloud	\$648	\$1,151	\$1,799
Sal. Pink/Morning Rose/Texas Rose	\$943	\$1,306	\$2,249
Medium Barre	\$1,105	\$1,521	\$2,626
Amer. Black/Eagle Black/D. Mahogany	\$1,138	\$1,889	\$3,026
Jet Black/Eagle Ruby Red	\$1,383	\$2,302	\$3,685
Blue Pearl	\$1,674	\$2,765	\$4,439

Weight for Grey:	775 lbs. (Seat/Support)
Weight for Colors:	861 lbs. (Seat/Support)

Vase- 0-8 x 0-6 x 0-10 (P2 vs P5)



\$175	\$334
\$208	\$400
\$271	\$579
\$271	\$579
\$271	\$579
\$271	\$579
\$271	\$579
\$271	\$579

Finish Two

SEAT	4-0 x 1-2 x 0-4	All Polished
SUPPORT	3-6 x 0-8 x 1-2	Pol. 4, Sawn Top

Granite Color	Seat	Support	Total
Blue Ridge/Pink Pearl	\$976	\$1,025	\$2,001
Eagle Blue	\$1,220	\$1,379	\$2,600
Kershaw/Grey Cloud	\$1,462	\$1,611	\$3,073
Sal. Pink/Morning Rose/Texas Rose	\$1,607	\$1,922	\$3,529
Medium Barre	\$1,664	\$2,166	\$3,830
Amer. Black/Eagle Black/D. Mahogany	\$1,951	\$2,170	\$4,121
Jet Black/Eagle Ruby Red	\$2,276	\$2,567	\$4,842
Blue Pearl	\$2,732	\$3,139	\$5,871

Turned Vase

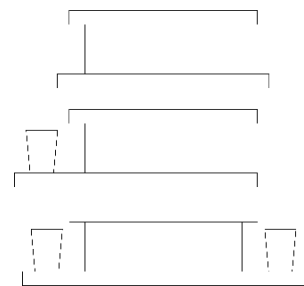


	0-6 x 10	0-8 x 1-0
\$182	\$265	
\$182	\$265	
\$569	\$761	
\$367	\$728	
\$245	\$456	
\$533	\$847	
\$212	\$318	
\$228	\$361	

Pink Pearl NOT Included in Vase Pricing. See Turned Vase Section for Pink Pearl Pricing. Some Colors May Be 4-6 Months Delivery Time.

4-6 x 1-4 x 0-4 Base (no vase) / 5-2 x 1-4 x 0-4 Base (1 vase) / 6-0 x 1-4 x 0-4 Base (2 vases)

Blue Ridge/Pink Pearl	\$486	\$559	\$645
Eagle Blue	\$582	\$671	\$777
Kershaw/Grey Cloud	\$741	\$850	\$986
Sal. Pink/Morning Rose/Texas Rose	\$1,078	\$1,237	\$1,435
Medium Barre	\$1,158	\$1,326	\$1,541
Amer. Black/Eagle Black/D. Mahogany	\$1,617	\$1,862	\$2,160
Jet Black/Eagle Ruby Red	\$1,624	\$1,869	\$2,166
Blue Pearl	\$1,862	\$2,137	\$2,481



*Vases NOT included in BASE ONLY pricing above. *All bases are Polished Top/BRP Edges

Add: \$75 for each Cremation Hole in Support (4 Holes MAX)

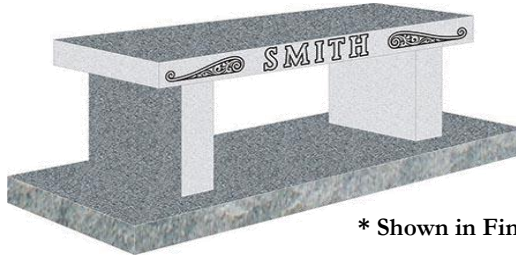
Carve & Lettering Charges

Carve and Letter Seat Edge Only	\$499	Family Name Seat Edge Only	\$185
Carve and Letter Support	\$761	Carved Square Vase	\$149

EG-2008

* Lettering, Vase, Base Addt'l.

Straight Leg Bench



* Shown in Finish One

Finish One

SEAT	4-0 x 1-2 x 0-4	PFT, Balance Sawn
(2) SUPPORTS	1-0 x 0-4 x 1-2	Pol. 1, Bal. Sawn

Weight for Grey:

421 lbs. (Seat/Support)

Weight for Colors:

468 lbs. (Seat/Support)

Granite Color	Seat	(2) Supports	Total
Blue Ridge/Pink Pearl	\$390	\$347	\$738
Eagle Blue	\$486	\$437	\$923
Kershaw/Grey Cloud	\$648	\$460	\$1,108
Sal. Pink/Morning Rose/Texas Rose	\$943	\$513	\$1,455
Medium Barre	\$1,105	\$576	\$1,680
Amer. Black/Eagle Black/D. Mahogany	\$1,138	\$652	\$1,789
Jet Black/Eagle Ruby Red	\$1,383	\$681	\$2,064
Blue Pearl	\$1,674	\$820	\$2,494



Vase- 0-8 x 0-6 x 0-10 (P2 vs P5)	
\$175	\$334
\$208	\$400
\$271	\$579
\$271	\$579
\$271	\$579
\$271	\$579
\$271	\$579
\$271	\$579

Finish Two

SEAT	4-0 x 1-2 x 0-4	All Polished
(2) SUPPORTS	1-0 x 0-4 x 1-2	Pol. 4, Sawn Top

Granite Color	Seat	(2) Supports	Total
Blue Ridge/Pink Pearl	\$976	\$595	\$1,571
Eagle Blue	\$1,220	\$761	\$1,981
Kershaw/Grey Cloud	\$1,462	\$1,058	\$2,520
Sal. Pink/Morning Rose/Texas Rose	\$1,607	\$1,164	\$2,772
Medium Barre	\$1,664	\$1,343	\$3,007
Amer. Black/Eagle Black/D. Mahogany	\$1,951	\$1,462	\$3,413
Jet Black/Eagle Ruby Red	\$2,276	\$1,594	\$3,870
Blue Pearl	\$2,732	\$1,852	\$4,584

Turned Vase

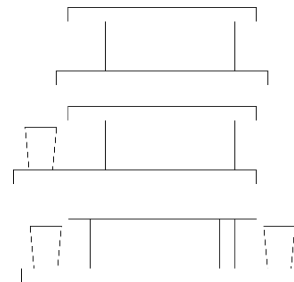


0-6 x 10	0-8 x 1-0
\$182	\$265
\$182	\$265
\$569	\$761
\$367	\$728
\$245	\$456
\$533	\$847
\$212	\$318
\$228	\$361

Pink Pearl NOT Included in Vase Pricing. See Turned Vase Section for [Pink Pearl](#) Pricing. Some Colors May Be 4-6 Months Delivery Time.

4-6 x 1-4 x 0-4 Base (no vase) / 5-2 x 1-4 x 0-4 Base (1 vase) / 6-0 x 1-4 x 0-4 Base (2 vases)

Blue Ridge/Pink Pearl	\$486	\$559	\$645
Eagle Blue	\$582	\$671	\$777
Kershaw/Grey Cloud	\$741	\$850	\$986
Sal. Pink/Morning Rose/Texas Rose	\$1,078	\$1,237	\$1,435
Medium Barre	\$1,158	\$1,326	\$1,541
Amer. Black/Eagle Black/D. Mahogany	\$1,617	\$1,862	\$2,160
Jet Black/Eagle Ruby Red	\$1,624	\$1,869	\$2,166
Blue Pearl	\$1,862	\$2,137	\$2,481



*Vases NOT included in BASE ONLY pricing above. *All bases are Polished Top/BRP Edges

Carve & Lettering Charges

Carve and Letter Seat Edge Only	\$499	Family Name Seat Edge Only	\$185
Carve and Letter Top of Seat	\$761	Carved Square Vase	\$149

EG-2009

* Lettering, Vase, Base Addt'l.

Curved Seat Bench



* Shown in Finish One

Finish One

SEAT	4-0 x 1-4 x 0-4	PFT, Balance Sawm
(2) SUPPORTS	1-0 x 0-4 x 1-2	Pol. 1, Bal. Sawm

Weight for Grey:

421 lbs. (Seat/Support)

Weight for Colors:

468 lbs. (Seat/Support)

Granite Color	Seat	(2) Supports	Total
Blue Ridge/Pink Pearl	\$1,551	\$347	\$1,899
Eagle Blue	\$1,849	\$437	\$2,285
Kershaw/Grey Cloud	\$2,679	\$460	\$3,139
Sal. Pink/Morning Rose/Texas Rose	\$2,884	\$513	\$3,397
Medium Barre	\$3,400	\$576	\$3,976
Amer. Black/Eagle Black/D. Mahogany	\$3,694	\$652	\$4,346
Jet Black/Eagle Ruby Red	\$4,065	\$681	\$4,746
Blue Pearl	\$4,644	\$820	\$5,464

Vase- 0-8 x 0-6 x 0-10 (P2 vs P5)		
	\$175	\$334
	\$208	\$400
	\$271	\$579
	\$271	\$579
	\$271	\$579
	\$271	\$579
	\$271	\$579
	\$271	\$579

Finish Two

SEAT	4-0 x 1-4 x 0-4	All Polished
(2) SUPPORTS	1-0 x 0-4 x 1-2	Pol. 4, Sawm Top

Granite Color	Seat	(2) Supports	Total
Blue Ridge/Pink Pearl	\$2,180	\$595	\$2,775
Eagle Blue	\$2,477	\$761	\$3,238
Kershaw/Grey Cloud	\$3,493	\$1,058	\$4,551
Sal. Pink/Morning Rose/Texas Rose	\$3,602	\$1,164	\$4,766
Medium Barre	\$4,029	\$1,343	\$5,371
Amer. Black/Eagle Black/D. Mahogany	\$4,416	\$1,462	\$5,877
Jet Black/Eagle Ruby Red	\$4,802	\$1,594	\$6,397
Blue Pearl	\$5,424	\$1,852	\$7,277

Turned Vase

0-6 x 10

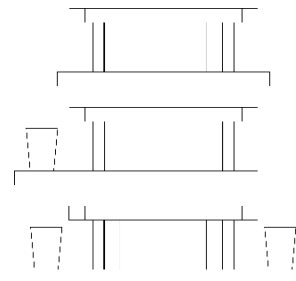
0-8 x 1-0

	\$182	\$265
	\$182	\$265
	\$569	\$761
	\$367	\$728
	\$245	\$456
	\$533	\$847
	\$212	\$318
	\$228	\$361

Pink Pearl NOT Included in Vase Pricing. See Turned Vase Section for [Pink Pearl](#) Pricing. Some Colors May Be 4-6 Months Delivery Time.

4-6 x 1-4 x 0-4 Base (no vase) / 5-2 x 1-4 x 0-4 Base (1 vase) / 6-0 x 1-4 x 0-4 Base (2 vases)

Blue Ridge/Pink Pearl	\$486	\$559	\$645
Eagle Blue	\$582	\$671	\$777
Kershaw/Grey Cloud	\$741	\$850	\$986
Sal. Pink/Morning Rose/Texas Rose	\$1,078	\$1,237	\$1,435
Medium Barre	\$1,158	\$1,326	\$1,541
Amer. Black/Eagle Black/D. Mahogany	\$1,617	\$1,862	\$2,160
Jet Black/Eagle Ruby Red	\$1,624	\$1,869	\$2,166
Blue Pearl	\$1,862	\$2,137	\$2,481



*Vases NOT included in BASE ONLY pricing above. *All bases are Polished Top/BRP Edges

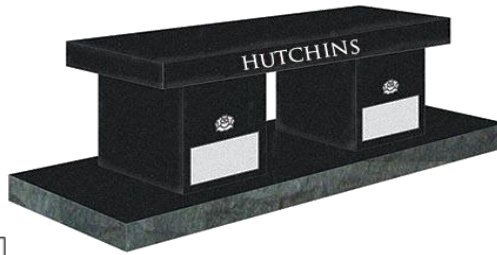
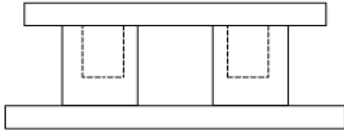
Carve & Lettering Charges

Carve and Letter Seat Edge Only	\$499	Family Name Seat Edge Only	\$185
Carve and Letter Top of Seat	\$761	Carved Square Vase	\$149

EG-2010

* Lettering, Vase, Base, Cremation Holes Add'l.

Cremation Bench



* Shown in Finish Two

Finish One

SEAT	4-0 x 1-2 x 0-4	PFT, Balance Sawn
(2) SUPPORTS	1-0 x 1-0 x 1-2	Pol. 2, Sawn Top, BRP

Weight for Grey:	702 lbs. (Seat/Support)
Weight for Colors:	780 lbs. (Seat/Support)

Granite Color	Seat	(2) Supports	Total	Vase- 0-8 x 0-6 x 0-10 (P2 vs P5)	
Blue Ridge/Pink Pearl	\$390	\$820	\$1,211	\$175	\$334
Eagle Blue	\$486	\$933	\$1,419	\$208	\$400
Kershaw/Grey Cloud	\$648	\$1,105	\$1,753	\$271	\$579
Sal. Pink/Morning Rose/Texas Rose	\$943	\$1,349	\$2,292	\$271	\$579
Medium Barre	\$1,105	\$1,521	\$2,626	\$271	\$579
Amer. Black/Eagle Black/D. Mahogany	\$1,138	\$1,773	\$2,911	\$271	\$579
Jet Black/Eagle Ruby Red	\$1,383	\$2,229	\$3,612	\$271	\$579
Blue Pearl	\$1,674	\$2,547	\$4,220	\$271	\$579

Finish Two

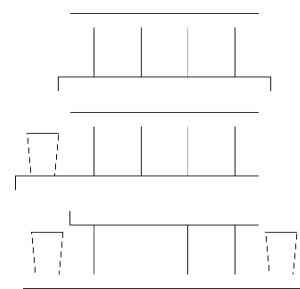
SEAT	4-0 x 1-2 x 0-4	All Polished
(2) SUPPORTS	1-0 x 1-0 x 1-2	Pol. 4, Sawn Top

Granite Color	Seat	(2) Supports	Total	Turned Vase	0-6 x 10	0-8 x 1-0
Blue Ridge/Pink Pearl	\$976	\$1,680	\$2,656		\$182	\$265
Eagle Blue	\$1,220	\$1,793	\$3,013		\$182	\$265
Kershaw/Grey Cloud	\$1,462	\$2,130	\$3,592		\$569	\$761
Sal. Pink/Morning Rose/Texas Rose	\$1,607	\$2,375	\$3,982		\$367	\$728
Medium Barre	\$1,803	\$2,547	\$4,349		\$245	\$456
Amer. Black/Eagle Black/D. Mahogany	\$1,951	\$2,798	\$4,750		\$533	\$847
Jet Black/Eagle Ruby Red	\$2,276	\$3,255	\$5,530		\$212	\$318
Blue Pearl	\$2,732	\$3,572	\$6,304		\$228	\$361

Pink Pearl NOT Included in Vase Pricing. See Turned Vase Section for Pink Pearl Pricing. Some Colors May Be 4-6 Months Delivery Time.

4-6 x 1-4 x 0-4 Base (no vase) / 5-2 x 1-4 x 0-4 Base (1 vase) / 6-0 x 1-4 x 0-4 Base (2 vases)

Blue Ridge/Pink Pearl	\$486	\$559	\$645
Eagle Blue	\$582	\$671	\$777
Kershaw/Grey Cloud	\$741	\$850	\$986
Sal. Pink/Morning Rose/Texas Rose	\$1,078	\$1,237	\$1,435
Medium Barre	\$1,158	\$1,326	\$1,541
Amer. Black/Eagle Black/D. Mahogany	\$1,617	\$1,862	\$2,160
Jet Black/Eagle Ruby Red	\$1,624	\$1,869	\$2,166
Blue Pearl	\$1,862	\$2,137	\$2,481



*Vases NOT included in BASE ONLY pricing above. *All bases are Polished Top/BRP Edges

Add: \$75 for each Cremation Hole in Support (2 Holes MAX)

Carve & Lettering Charges

Carve and Letter Seat Edge Only	\$499	Family Name Seat Edge Only	\$185
Carve and Letter Front of Supports (price for both)	\$595	Carved Square Vase	\$149
Carve and Letter Top of Seat	\$761		

EG-2019

* Lettering, Vase, Base, Cremation Holes Add'l.

Cremation Bench



Finish One

SEAT	4-0 x 1-2 x 0-4	PFT, Balance Sawn
SUPPORT	3-6 x 0-8 x 1-2	Pol. 2, Sawn Top, BRP

* Shown in Finish Two

Weight for Grey:	775 lbs. (Seat/Support)
Weight for Colors:	861 lbs. (Seat/Support)

Granite Color	Seat	Support	Total
Blue Ridge/Pink Pearl	\$390	\$1,138	\$1,528
Eagle Blue	\$486	\$1,392	\$1,879
Kershaw/Grey Cloud	\$648	\$1,435	\$2,084
Sal. Pink/Morning Rose/Texas Rose	\$943	\$1,607	\$2,550
Medium Barre	\$1,105	\$1,991	\$3,096
Amer. Black/Eagle Black/D. Mahogany	\$1,138	\$2,788	\$3,926
Jet Black/Eagle Ruby Red	\$1,383	\$3,099	\$4,482
Blue Pearl	\$1,674	\$3,291	\$4,965



Vase- 0-8 x 0-6 x 0-10 (P2 vs P5)	
\$175	\$334
\$208	\$400
\$271	\$579
\$271	\$579
\$271	\$579
\$271	\$579
\$271	\$579
\$271	\$579

Finish Two

SEAT	4-0 x 1-2 x 0-4	All Polished
SUPPORT	3-6 x 0-8 x 1-2	Pol. 4, Sawn Top

Granite Color	Seat	Support	Total
Blue Ridge/Pink Pearl	\$976	\$1,918	\$2,894
Eagle Blue	\$1,220	\$2,206	\$3,427
Kershaw/Grey Cloud	\$1,462	\$2,276	\$3,737
Sal. Pink/Morning Rose/Texas Rose	\$1,607	\$2,474	\$4,081
Medium Barre	\$1,803	\$2,801	\$4,604
Amer. Black/Eagle Black/D. Mahogany	\$1,951	\$3,483	\$5,434
Jet Black/Eagle Ruby Red	\$2,276	\$3,883	\$6,159
Blue Pearl	\$2,732	\$4,468	\$7,200

Turned Vase

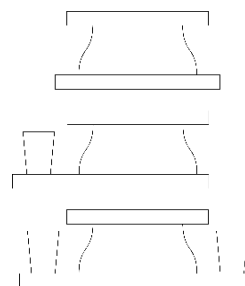


0-6 x 10	0-8 x 1-0
\$182	\$265
\$182	\$265
\$569	\$761
\$367	\$728
\$245	\$456
\$533	\$847
\$212	\$318
\$228	\$361

Pink Pearl NOT Included in Vase Pricing. See Turned Vase Section for Pink Pearl Pricing. Some Colors May Be 4-6 Months Delivery Time.

4-6 x 1-4 x 0-4 Base (no vase) / 5-2 x 1-4 x 0-4 Base (1 vase) / 6-0 x 1-4 x 0-4 Base (2 vases)

Blue Ridge/Pink Pearl	\$486	\$559	\$645
Eagle Blue	\$582	\$671	\$777
Kershaw/Grey Cloud	\$741	\$850	\$986
Sal. Pink/Morning Rose/Texas Rose	\$1,078	\$1,237	\$1,435
Medium Barre	\$1,158	\$1,326	\$1,541
Amer. Black/Eagle Black/D. Mahogany	\$1,617	\$1,862	\$2,160
Jet Black/Eagle Ruby Red	\$1,624	\$1,869	\$2,166
Blue Pearl	\$1,862	\$2,137	\$2,481



*Vases NOT included in BASE ONLY pricing above. *All bases are Polished Top/BRP Edges

Add: \$75 for each Cremation Hole in Support (3 Holes MAX)

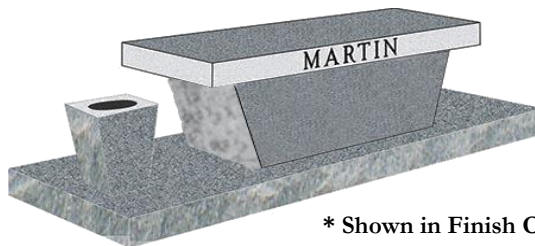
Carve & Lettering Charges

Carve and Letter Seat Edge Only	\$499	Family Name Seat Edge Only	\$185
Carve and Letter Support	\$761	Carved Square Vase	\$149

EG-2020

* Lettering, Vase, Base, Cremation Holes Add'l.

Cremation Bench



* Shown in Finish One

Finish One

SEAT	4-0 x 1-2 x 0-4	PFT, Balance Sawn
SUPPORT	3-6 x 0-8 x 1-2	Pol. 2, BRP

Weight for Grey:	775 lbs. (Seat/Support)
Weight for Colors:	861 lbs. (Seat/Support)

Granite Color	Seat	Support	Total	Vase- 0-8 x 0-6 x 0-10 (P2 vs P5)	
Blue Ridge/Pink Pearl	\$390	\$857	\$1,247	\$175	\$334
Eagle Blue	\$486	\$939	\$1,426	\$208	\$400
Kershaw/Grey Cloud	\$648	\$1,151	\$1,799	\$271	\$579
Sal. Pink/Morning Rose/Texas Rose	\$943	\$1,310	\$2,252	\$271	\$579
Medium Barre	\$1,105	\$1,521	\$2,626	\$271	\$579
Amer. Black/Eagle Black/D. Mahogany	\$1,138	\$1,889	\$3,026	\$271	\$579
Jet Black/Eagle Ruby Red	\$1,383	\$2,302	\$3,685	\$271	\$579
Blue Pearl	\$1,674	\$2,765	\$4,439	\$271	\$579



Finish Two

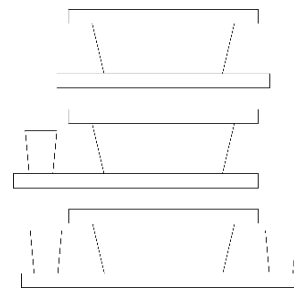
SEAT	4-0 x 1-2 x 0-4	All Polished
SUPPORT	3-6 x 0-8 x 1-2	Pol. 4, Sawn Top

Granite Color	Seat	Support	Total	Turned Vase	0-6 x 10	0-8 x 1-0
Blue Ridge/Pink Pearl	\$976	\$1,078	\$2,054		\$182	\$265
Eagle Blue	\$1,220	\$1,452	\$2,672		\$182	\$265
Kershaw/Grey Cloud	\$1,462	\$1,693	\$3,155		\$569	\$761
Sal. Pink/Morning Rose/Texas Rose	\$1,607	\$2,021	\$3,628		\$367	\$728
Medium Barre	\$1,803	\$2,276	\$4,078		\$245	\$456
Amer. Black/Eagle Black/D. Mahogany	\$1,951	\$2,282	\$4,234		\$533	\$847
Jet Black/Eagle Ruby Red	\$2,276	\$2,696	\$4,971		\$212	\$318
Blue Pearl	\$2,732	\$3,139	\$5,871		\$228	\$361

Pink Pearl NOT Included in Vase Pricing. See Turned Vase Section for Pink Pearl Pricing. Some Colors May Be 4-6 Months Delivery Time.

4-6 x 1-4 x 0-4 Base (no vase) / 5-2 x 1-4 x 0-4 Base (1 vase) / 6-0 x 1-4 x 0-4 Base (2 vases)

Blue Ridge/Pink Pearl	\$486	\$559	\$645
Eagle Blue	\$582	\$671	\$777
Kershaw/Grey Cloud	\$741	\$850	\$986
Sal. Pink/Morning Rose/Texas Rose	\$1,078	\$1,237	\$1,435
Medium Barre	\$1,158	\$1,326	\$1,541
Amer. Black/Eagle Black/D. Mahogany	\$1,617	\$1,862	\$2,160
Jet Black/Eagle Ruby Red	\$1,624	\$1,869	\$2,166
Blue Pearl	\$1,862	\$2,137	\$2,481



*Vases NOT included in BASE ONLY pricing above. *All bases are Polished Top/BRP Edges

Add: \$75 for each Cremation Hole in Support (3 Holes MAX)

Carve & Lettering Charges

Carve and Letter Seat Edge Only	\$499	Family Name Seat Edge Only	\$185
Carve and Letter Support	\$761	Carved Square Vase	\$149

Metal Canisters for Cremains

Size	
OVERALL	8.25" Tall with 5" Diameter
Canister	
Gunmetal Finish	\$126

